

TYPES OF INTRA OCULAR LENSES (IOL)

Multi focal / Bifocal IOL

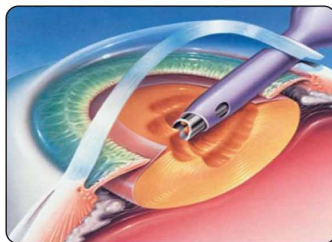
This is a foldable lens which can aid both distant and near vision. The patient will not have to use spectacles for both distant and near vision.

Foldable IOL

These lenses which are composed of substances like silicon, Acrylic etc can be folded and inserted into the eye through the same incision made for the surgery. This provides us with the complete benefit of key hole surgery

Rigid IOL

This is the traditionally used lens made up of a substance called PMMA. This can be inserted into the eye only after widening the incision after cataract removal.



Remember

Cataract is not a disease, but just apart of the unavoidable ageing process. Its symptoms can be found in around 78% of the population.

Vision can be regained only through surgery.

Phaco Emulsification is the best procedure available of its kind.



الاهلية للعناية بالعيون
AHALIA EYE CARE



CATARACT



AHALIA EYE CARE

Delma Street, Old Airport Road,
P.O Box:2419, Abu Dhabi, UAE

Fax: 02 44 70 346, E: uniqueds@ahaliaeyecare.com

Ph: 02 44 39 777, W: www.ahaliaeyecare.com

الاهلية للعناية بالعيون
AHALIA EYE CARE

What is Cataract?



Normal Vision



Cataract Vision

The functioning of eye can be compared to a photographic camera. The light rays which fall on the cornea pass through the lens and eventually fall on the retina. The optic nerve carries this impulse to the brain and results in vision. Any opacity that happens in the lens restricts the free passage of light rays into the eye which in turn results in blurred and foggy vision. This ailment is referred to as cataract and chronic opacity of lens may lead to complete blindness of the person.

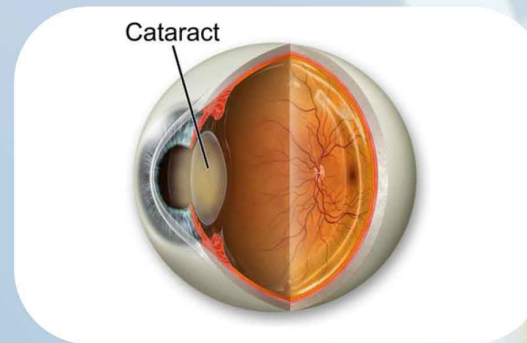
Causes of Cataract

Even though cataract occurs as a part of the unavoidable ageing process, it can occur in any person due to several reasons like:

- Injuries
- Excessive sunlight
- Toxic chemicals
- Changes in body metabolism
- Secondary to other eye diseases and inflammations

Symptoms of Cataract

- Gradual & painless loss of vision
- Blurred & foggy vision
- Sensitivity to light & glare
- Double vision & dull colour perception
- Feeling of a film over the eyes
- Poor near & distant vision
- Change in colour of pupil



Who all are prone to Cataract

Cataract can occur in any person above the age of 50. It may also occur as a result of side effects from the use of medicine, injuries, eye diseases.

Cataract Surgery

The clouded lens is removed through surgery and is replaced by a lens called IOL which takes only about 15 minutes. There are different varieties of IOL based on their composition.

ECCE - Extra Capsular Cataract Extraction

Here the cataract is removed through an incision of about 10-12 mm and the rigid IOL is placed in the eye through this opening. Then the incision is closed with several sutures.

Phaco Emulsification (Key hole Surgery)

It is an advanced technology in which the cataract is broken into small pieces by a machine with ultrasonic waves and removed with a needle. The IOL is inserted into the eye and the wound heals without sutures. Stable refraction is gained within a period of one month.

Advantages of Phaco Emulsification

- Small incision, no irritation, no watering.
- Eye is anesthetized using drops and not through injection
- Procedure is completed within 150min.
- Foldable IOL can be inserted.
- Patient can get back to normal life within one week.

S.I.C.S



Micro incision Cataract

